

TIGHTENING TORQUE FOR TERMINAL BLOCK IS 9 in-lbs.

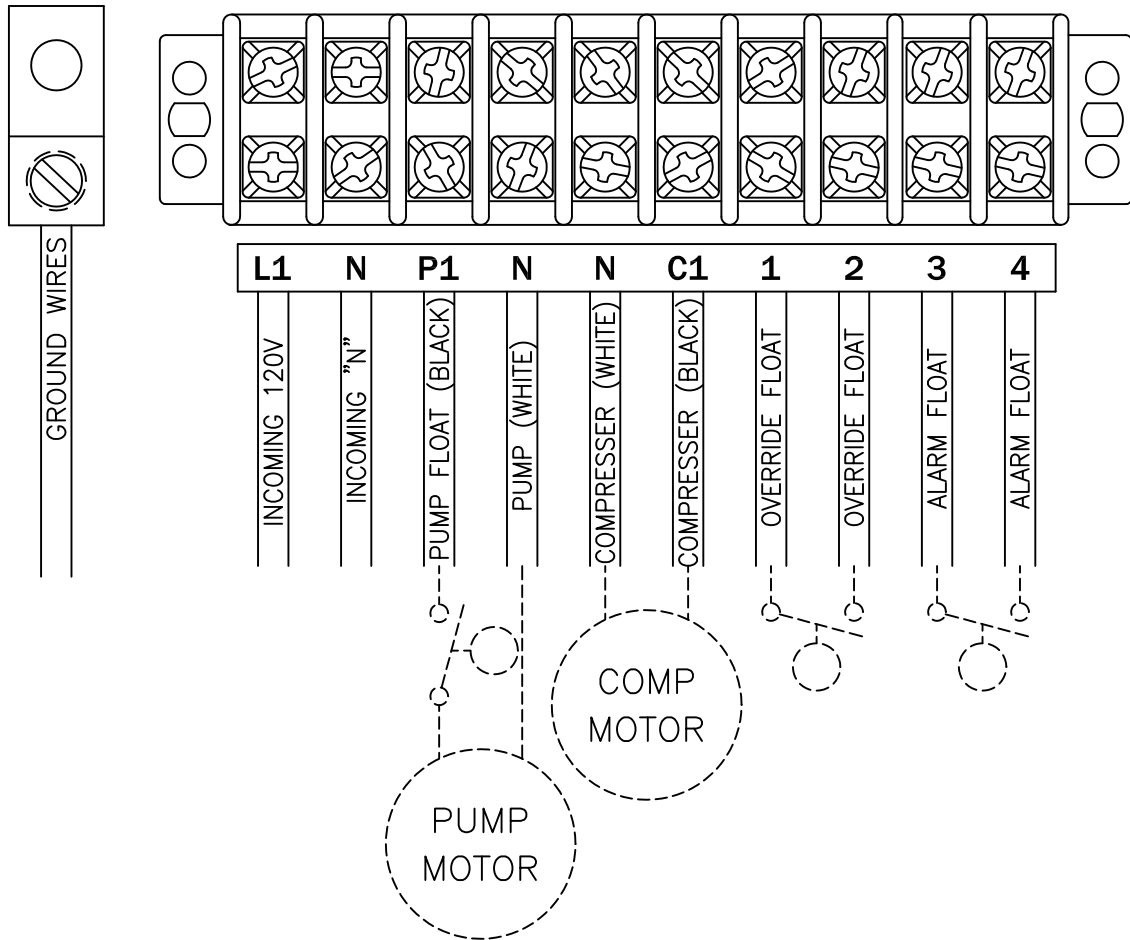
MODEL NO.

C

PAGE

1

CONNECTION DIAGRAM



ALL INFORMATION CONTAINED IN THIS DRAWING IS
CONFIDENTIAL AND PROPRIETARY TO SEPTIC PRODUCTS INC.



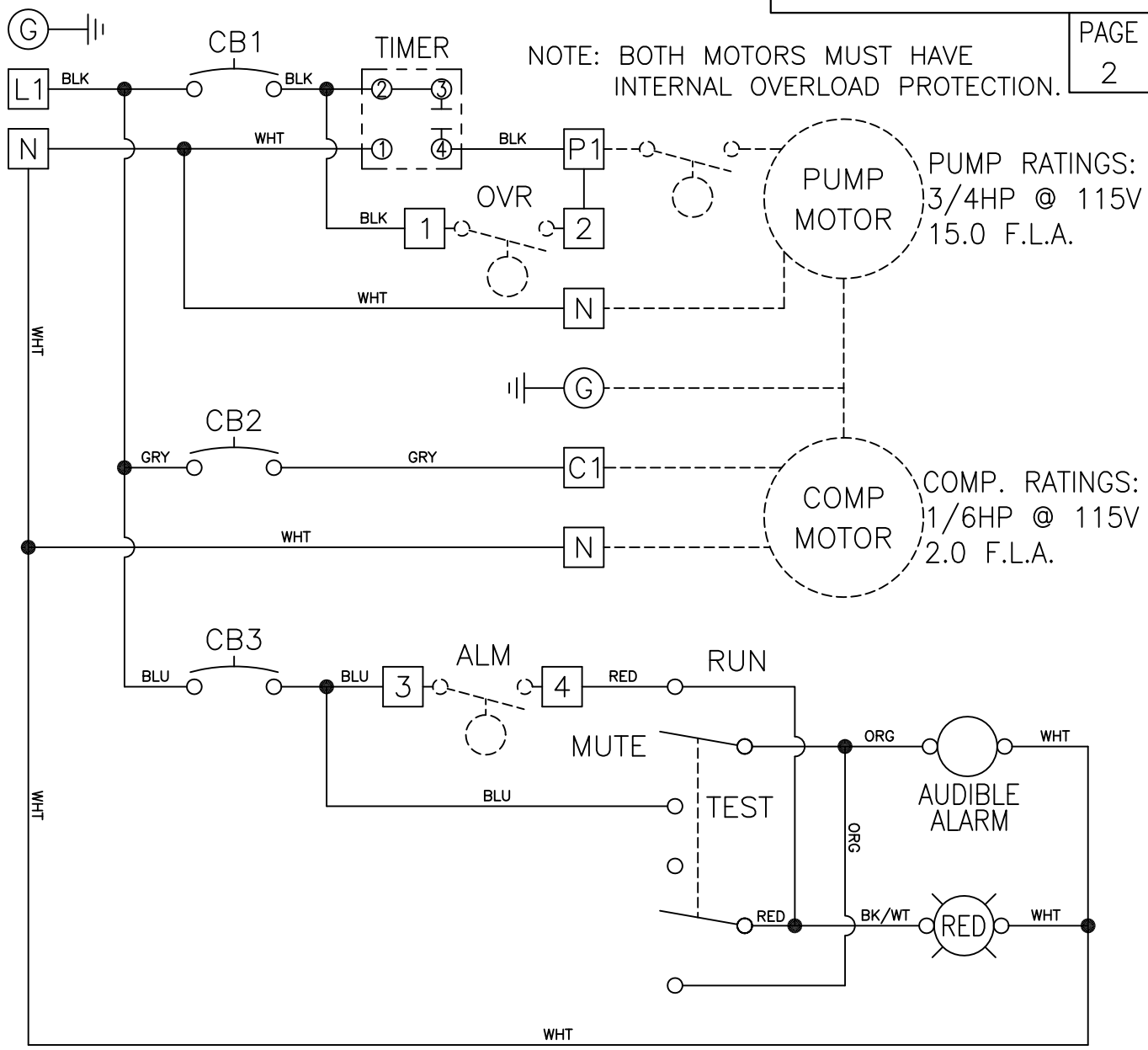
Wastewater Technologies

CHANGES		TOLERANCES	DRAWN BY	DATE	POWER CONNECTION DIAGRAM	
F		DECIMALS .XXX = ±.005	D. MIDDLETON	5/20/04		
E		.XX = ±.010	MATERIAL SPECIFICATION: AS NOTED		FULL	50B003
D		FRACTIONAL X/X = ±.1/64				
C		ANGLES				
B		X' = ±1/2'				
A						

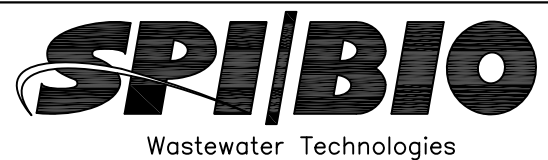
PUMP/COMPRESSOR POWER CIRCUIT
115V - 1PH

MODEL NO. C

PAGE 2



NOTES: MAIN PANEL DISCONNECT MUST BE PROVIDED BY INSTALLER.
DASHED LINES INDICATE ITEMS NOT CONTAINED IN THE PANEL.
FIELD WIRING MUST BE A MINIMUM OF 60°C COPPER WIRE.
REQUIRED TORQUE FOR TERMINAL BLOCK SCREWS IS 9 in-lbs.
ALL INFORMATION CONTAINED IN THIS DRAWING IS
CONFIDENTIAL AND PROPRIETARY TO SEPTIC PRODUCTS, INC.



CHANGES	TOLERANCES	DRAWN BY	DATE	SCHEMATIC, ELECTRICAL W/TIMER	
F	DECIMALS .XXX = ±.005 .XX = ±.010	D. MIDDLETON	06/20/04		
E	FRACTIONAL X/X = ±.1/64	MATERIAL SPECIFICATION: AS NOTED		FULL	50B003
D	ANGLES X° = ±1/2°				
C					
B					
A					