

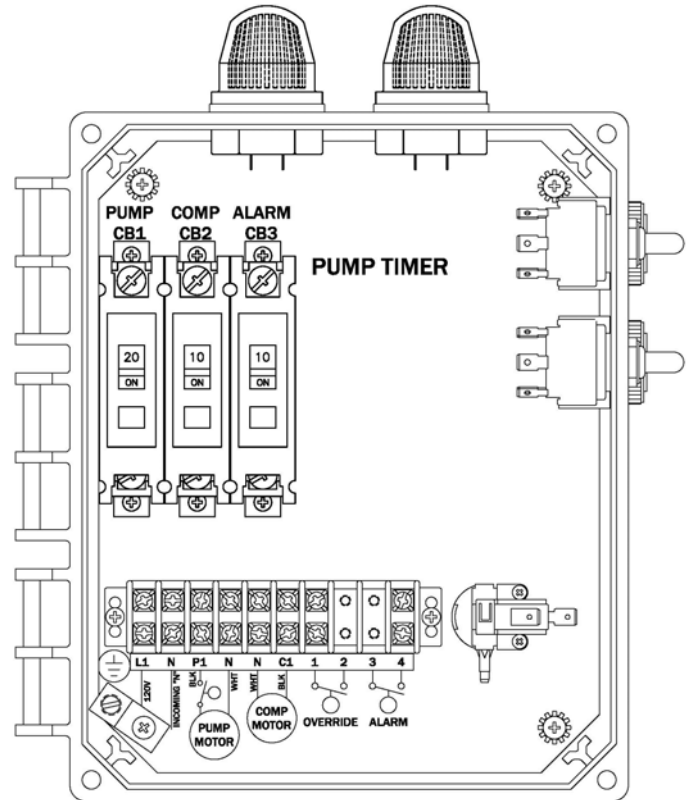


CONTROL PANEL

“B” Model Aerobic Control Panel

Features & Benefits

- Circuit Breakers for Pump, Compressor & Alarm Circuits
- Large & Easy to Access Terminal Block
- Externally Mounted Run/Mute/Test Switch w/UV resistant sealing boot
- Externally Mounted Audible Alarms
- Rugged UV resistant Externally Mounted Alarm Lights
- Separate Air Loss Alarm Circuit
- Externally or Internally Mounted Air Pressure Switch
- Durable Weather Resistant Hinged Poly Enclosure
- Silk Screen Back Panel
- Ground Lug
- Easily Replaceable Components
- Nema 4x Rating
- Color Coded Internal Wiring
- Built and Labeled to UL 508A Standard
- Works with most Aerobic Treatment Systems
- Provided with Wiring Schematic and Detailed Connection Diagram for Installer
- Mounting Feet for Enclosure



(50B006-BIO-B Shown)

Available Options

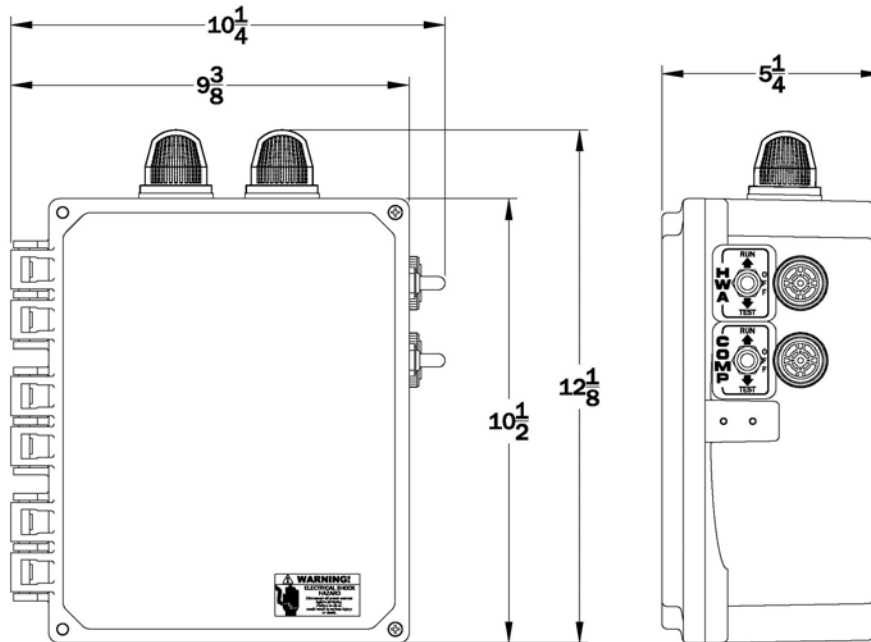
- Externally Mounted Pump Test Switch
- Auto-Dialer
- Locking Stainless Steel Latch
- 24 Hr Timer (See 50B005-BIO-A)
- Mercury or Mechanical Float Switches for the Pump and High Water Alarm Circuits



Note: Consult the factory for other available options. Also some options may require an increase in the enclosure size.

“B” Model Aerobic Control Panel

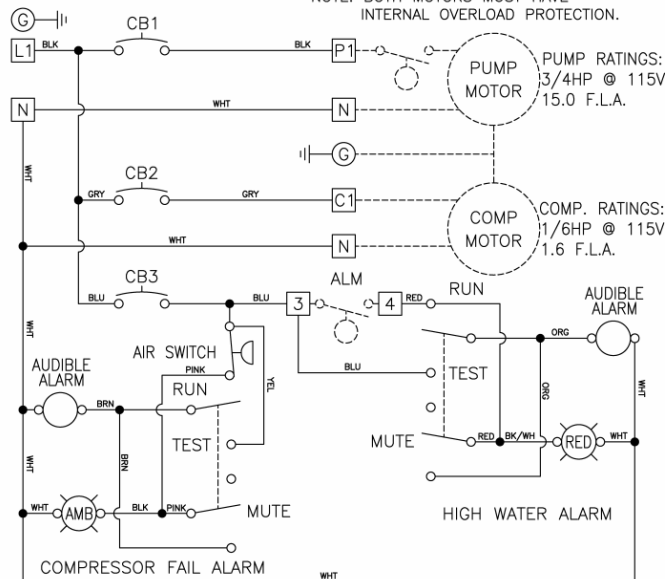
Panel Dimensions



Wiring Schematic

PUMP/COMPRESSOR POWER CIRCUIT
115V - 1PH

NOTE: BOTH MOTORS MUST HAVE
INTERNAL OVERLOAD PROTECTION.



NOTES: MAIN PANEL DISCONNECT MUST BE PROVIDED BY INSTALLER.
DASHED LINES INDICATE ITEMS NOT CONTAINED IN THE PANEL.
FIELD WIRING MUST BE A MINIMUM OF 60°C COPPER WIRE.
REQUIRED TORQUE FOR TERMINAL BLOCK SCREWS IS 9 in-lbs.