

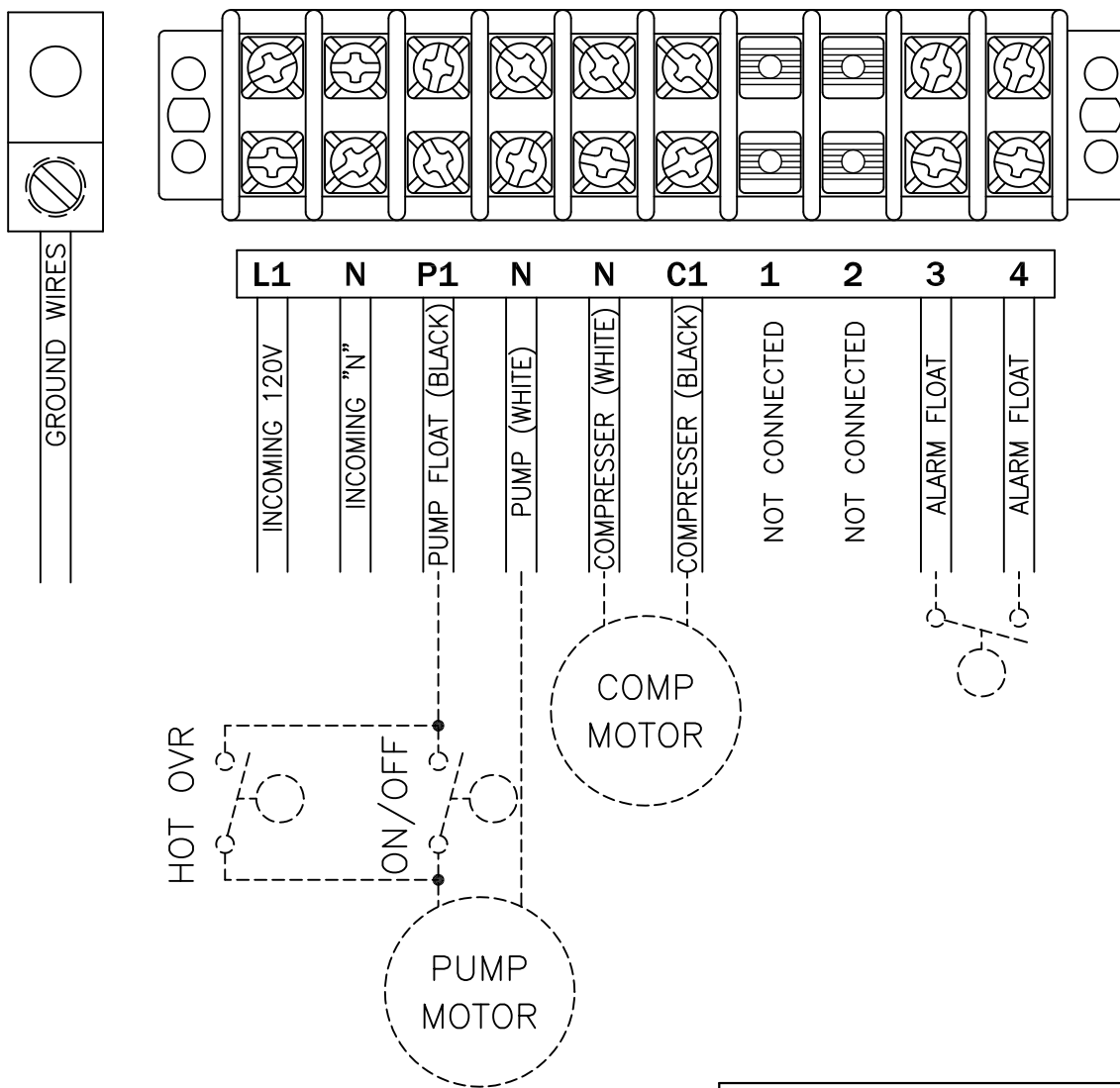
TIGHTENING TORQUE FOR TERMINAL BLOCK IS 9 in-lbs.

MODEL NO.

D

PAGE  
1

# CONNECTION DIAGRAM



ALL INFORMATION CONTAINED IN THIS DRAWING IS CONFIDENTIAL AND PROPRIETARY TO SEPTIC PRODUCTS INC.



CHANGES	TOLERANCES	DRAWN BY	DATE
F	DECIMALS .XXX = ±.005 .XX = ±.010 FRACTIONAL X/X = ±.1/64 ANGLES X° = ±1/2°	D. MIDDLETON	5/20/04
E		MATERIAL SPECIFICATION:  AS NOTED	
D			
C			
B			
A			

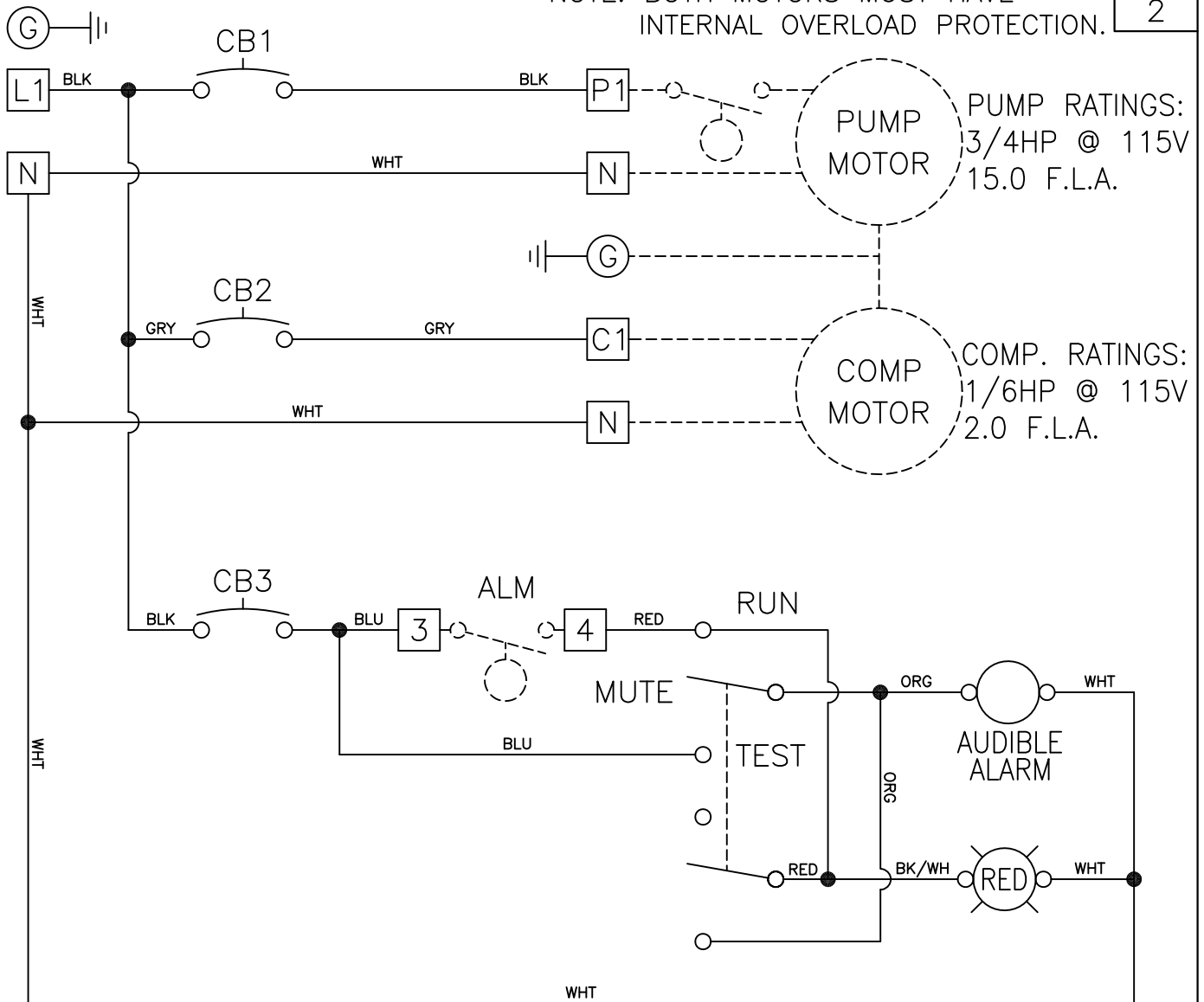
POWER CONNECTION DIAGRAM	
SCALE:	PART NO.
FULL	50B007

PUMP/COMPRESSER POWER CIRCUIT  
115V – 1PH

MODEL NO. D

PAGE 2

NOTE: BOTH MOTORS MUST HAVE INTERNAL OVERLOAD PROTECTION.



NOTES: MAIN PANEL DISCONNECT MUST BE PROVIDED BY INSTALLER.  
DASHED LINES INDICATE ITEMS NOT CONTAINED IN THE PANEL.  
FIELD WIRING MUST BE A MINIMUM OF 60°C COPPER WIRE.  
REQUIRED TORQUE FOR TERMINAL BLOCK SCREWS IS 9 in-lbs.

ALL INFORMATION CONTAINED IN THIS DRAWING IS CONFIDENTIAL AND PROPRIETARY TO SEPTIC PRODUCTS, INC.



CHANGES	TOLERANCES	DRAWN BY	DATE
F	DECIMALS .xxx = ±.005	D. MIDDLETON	06/20/04
E	.xx = ±.010	MATERIAL SPECIFICATION:  AS NOTED	
D	FRACTIONAL		
C	x/x = ±.1/64		
B	ANGLES		
A	x' = ±1/2"		

SCHEMATIC, ELECTRICAL W/O TIMER	
SCALE:	PART NO.
FULL	50B007